

The  
Simple  
Building co.

MODULAR . SIMPLE . LUXURY



The Dutch

## MISSION

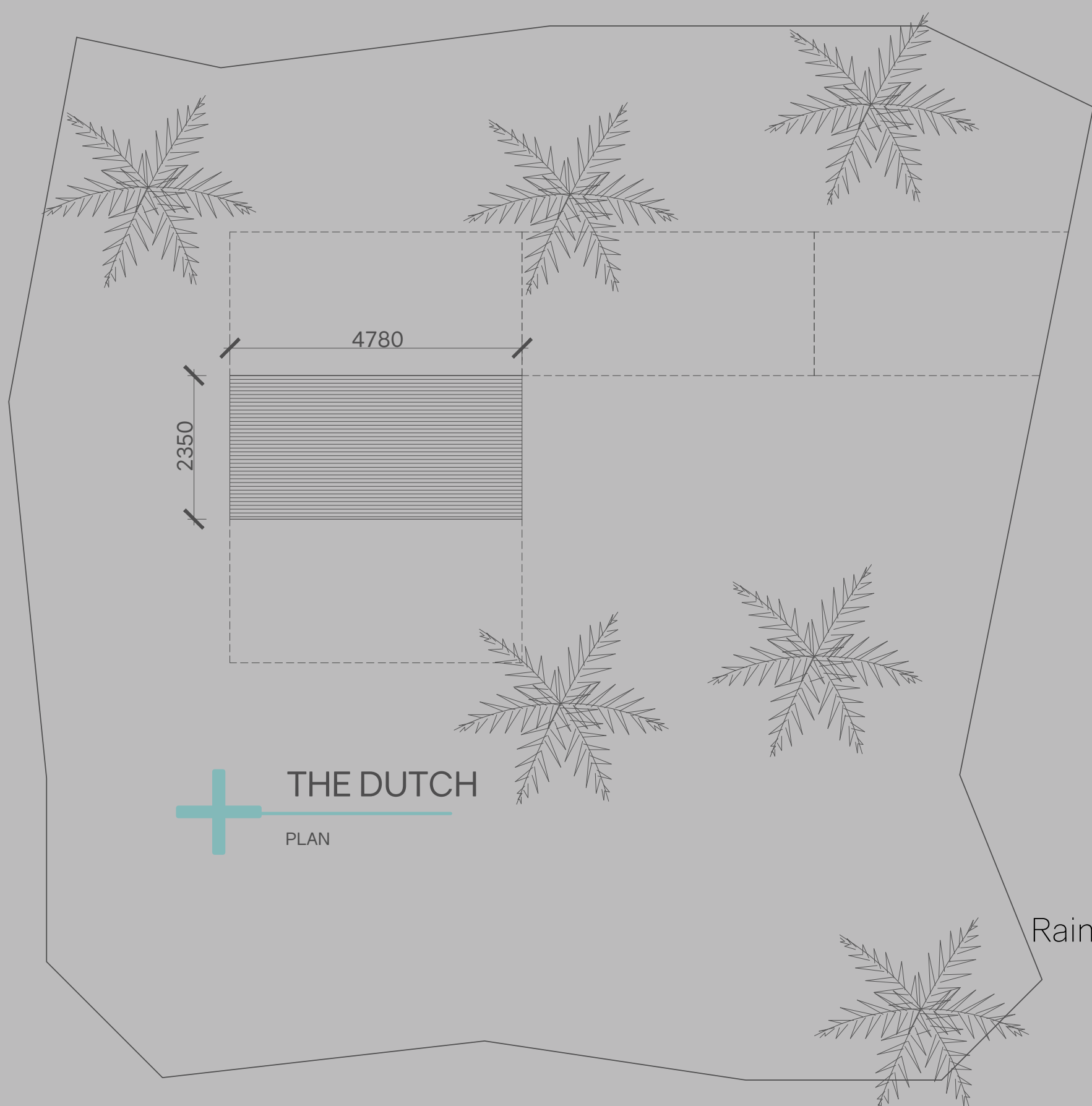
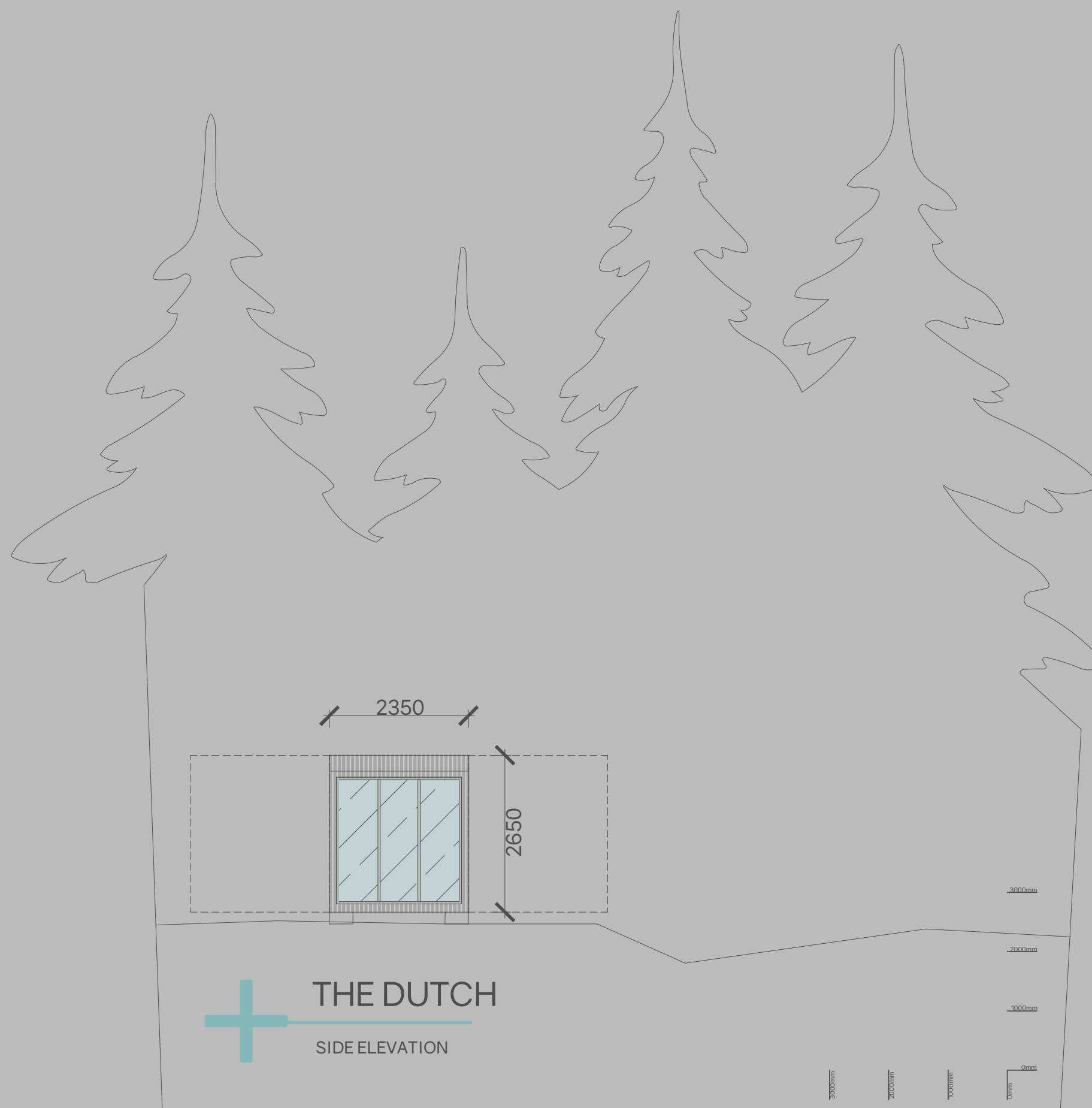
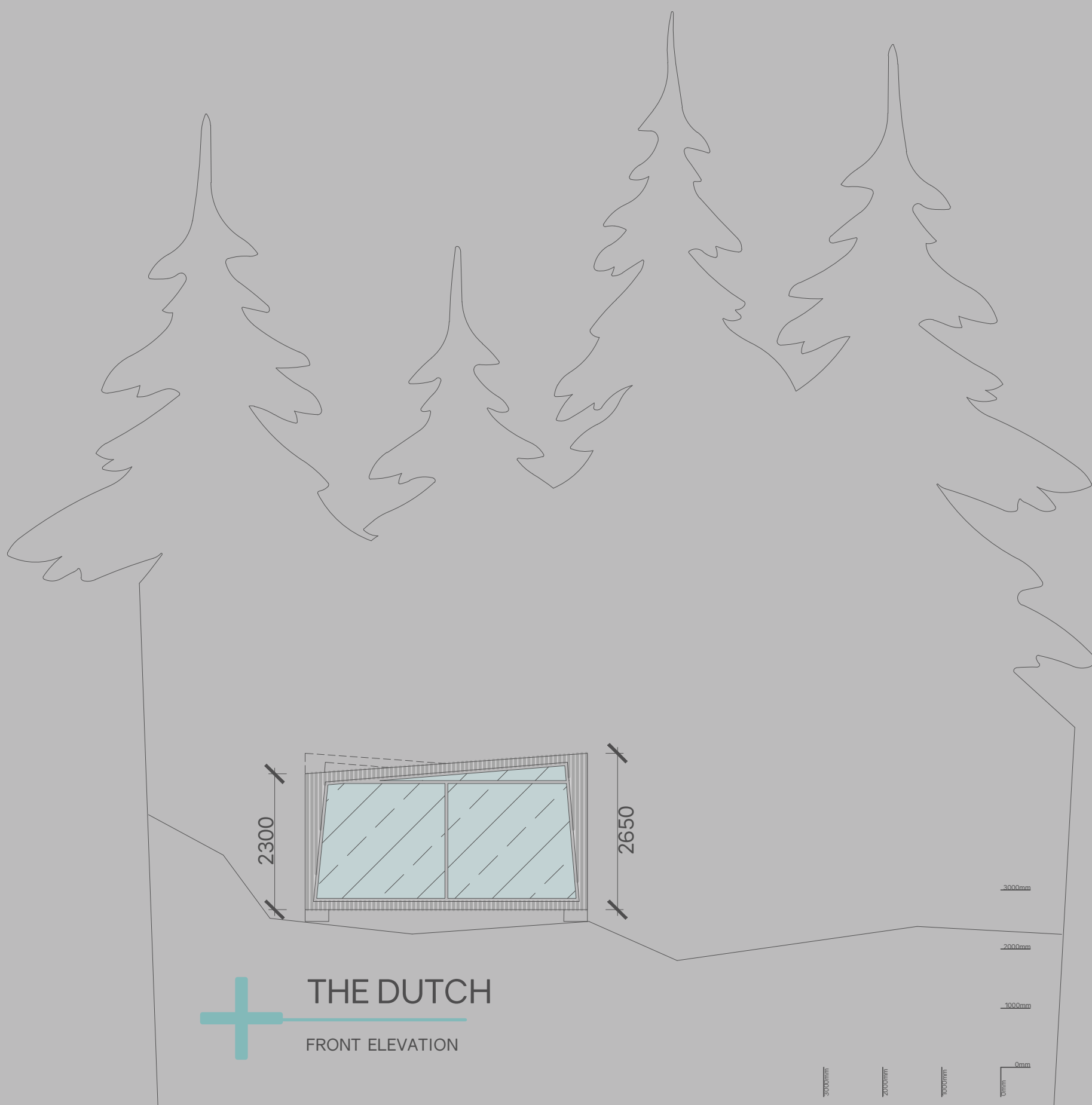
Founded on principles of sustainable and self reliant life practices, coupled with a love for the natural world, [The Simple Building co.](#) was formed in 2018 to rethink how we live, play, travel and work.

We set out on a two year journey to design a range of modular and mobile lifestyle units that not only aim to work in symbiosis with the environment but also to maintain the flexibility needed in todays ever changing world.

Our inspiration is always almost inspired by nature, from the shelter and strength of an acacia tree, to the uncanny precision of a daisy and the remarkable air-cooling systems in termite mounds, all the answers we need are there,

All of these endeavours however have not come at a compromise to comfort and luxury, our units are suitable for everything from luxury beach retreat to remote five star mountain escapes.

Manufactured to the highest standards, we are proud to provide a 10 year manufacturers warranty on structure, a 5 year supplier warranty fixtures and a 3 supplier year warranty furniture and equipment.



#### Materials:

Roof- EDPM Foil with Aluminium and glass skylight

Exterior Cladding - Local slatted pine

Windows & Doors - Aluminium framed doors and windows

Base- Structural Steel base plate

Foundation - Concrete footing and column to take base plate sleeve

Exterior Staircase - Steel and timber (enclosed or open)

#### Insulation:

Rockwool 260mm horizontal and 160mm vertical

Double glazing - 10+16+8 mm.

#### Structure:

Cold rolled mid steel structure

Concrete foundation (by client on site)

#### Sewage:

Case by case : septic tank, chemical toilet or dry toilet

#### Off Grid:

Solar panels and batteries size confined case by case

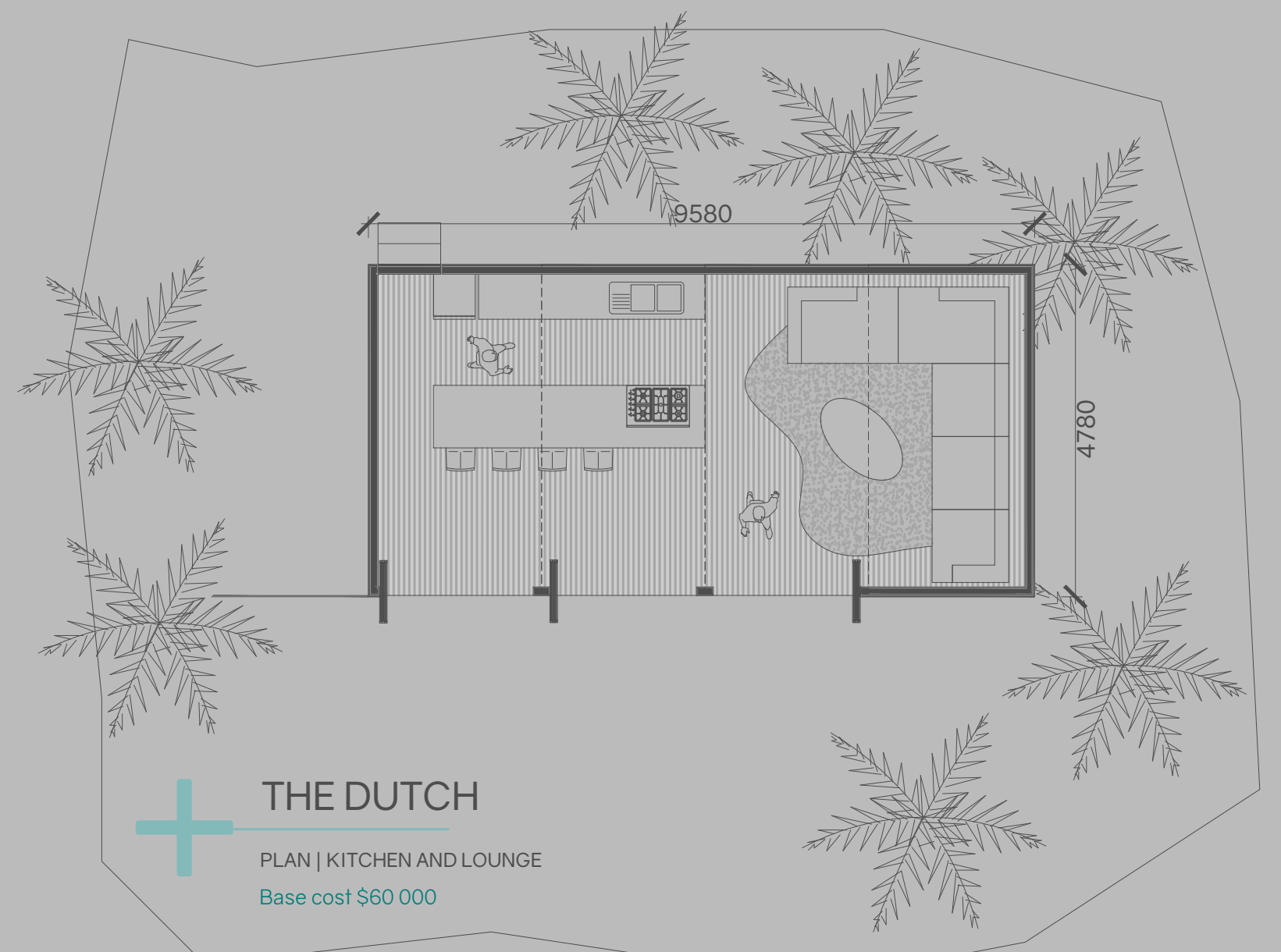
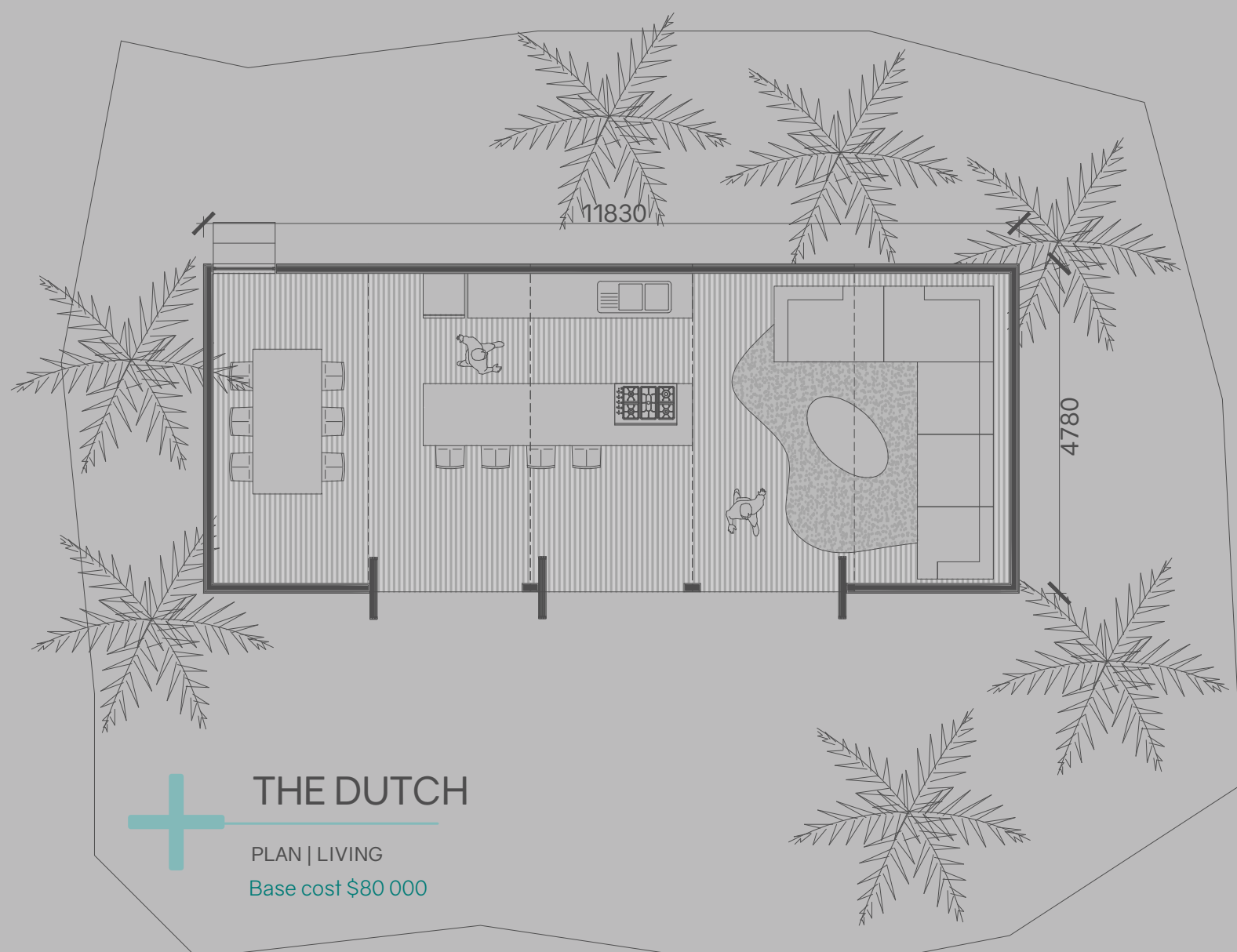
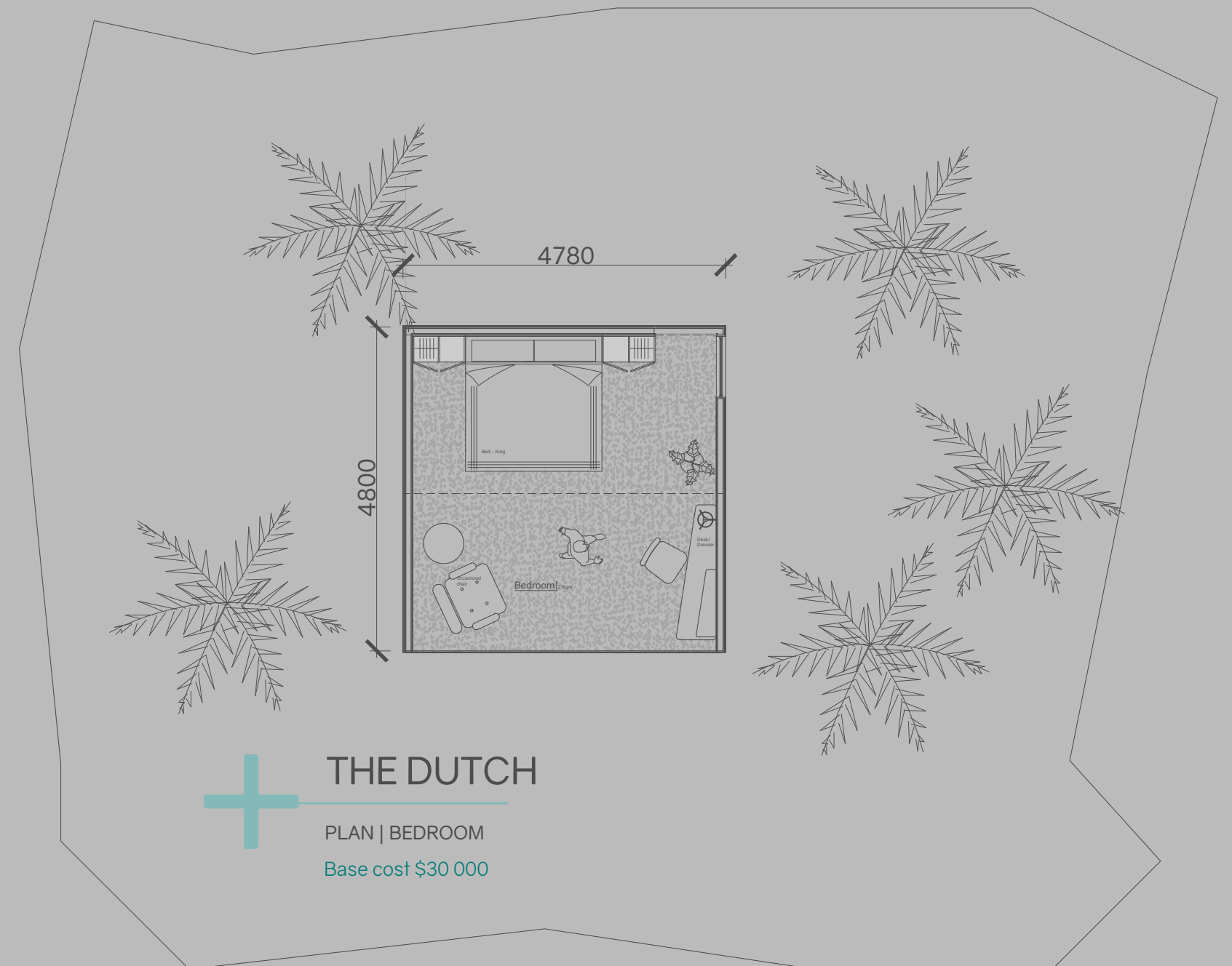
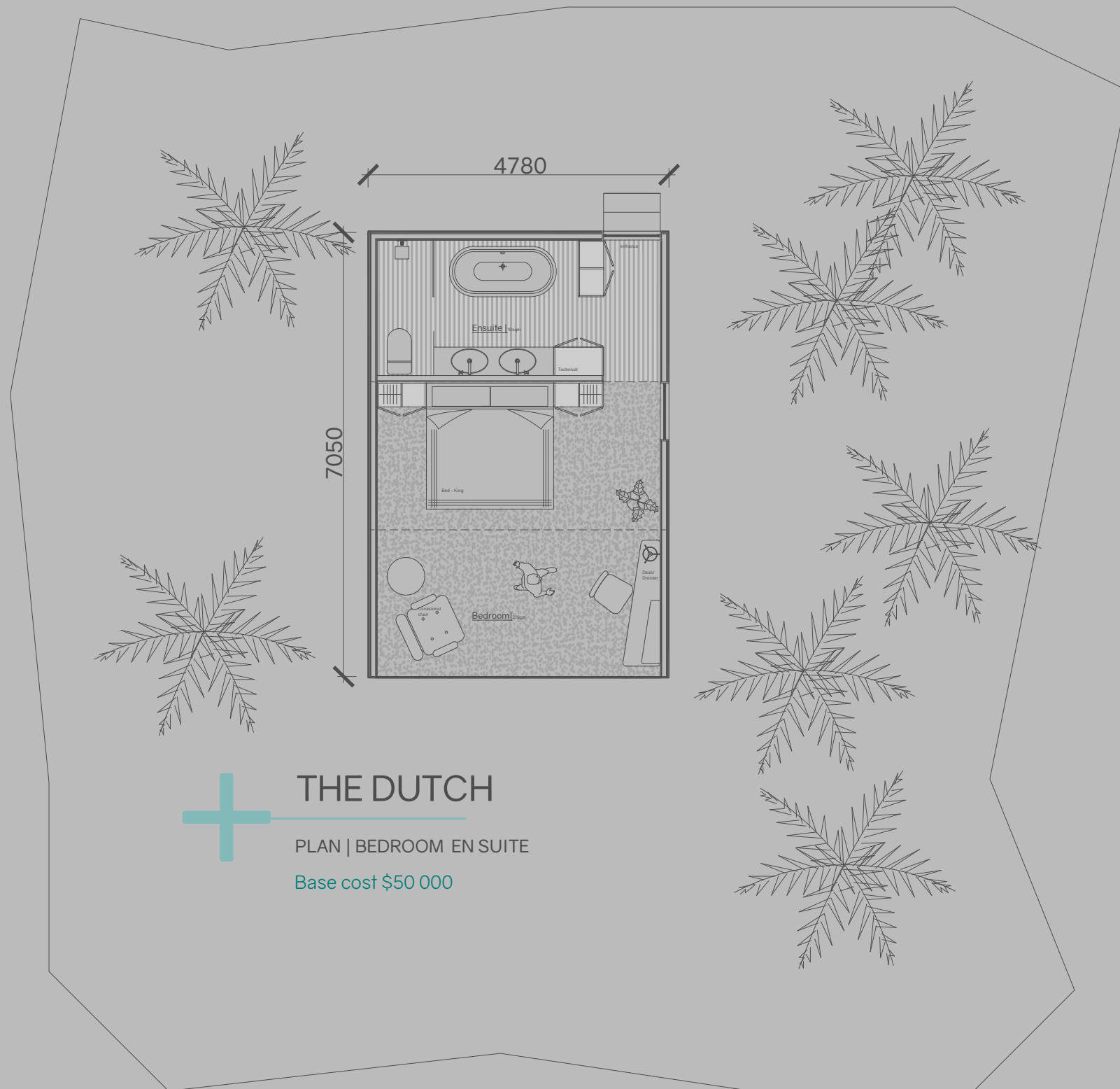
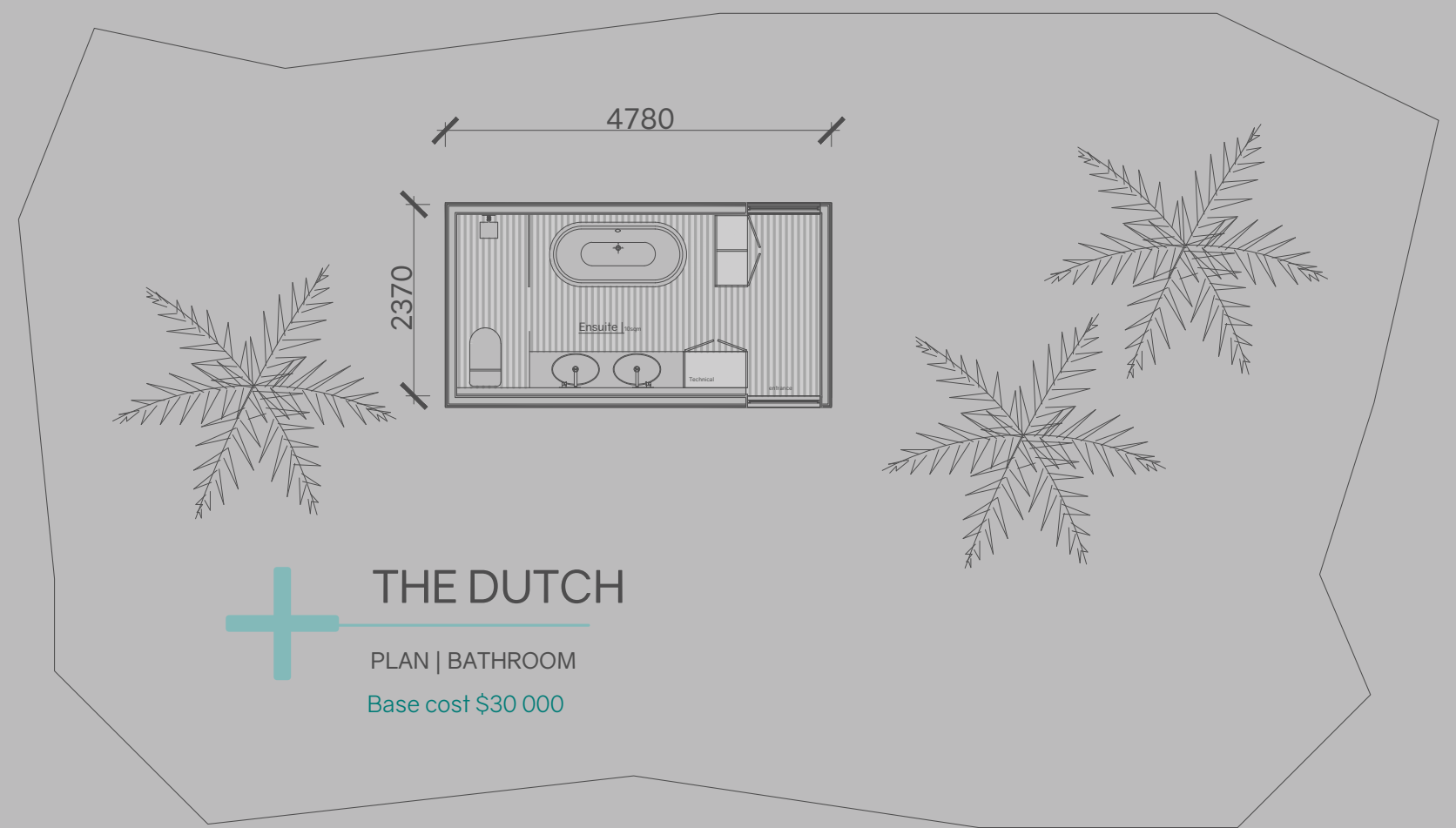
Rain water harvesting storage tanks with solar pump size confirmed case by case

Grey water collection tank and filtration for irrigation use

#### Optional:

Solar farm

Swimming pond rainwater harvesting storage



#### Materials:

Structure - lightweight steel

Interior Walls - Plywood

Floors - Engineered hardwood flooring

Floor Bedroom - Recycled (fishing nets) luxury carpet tiles

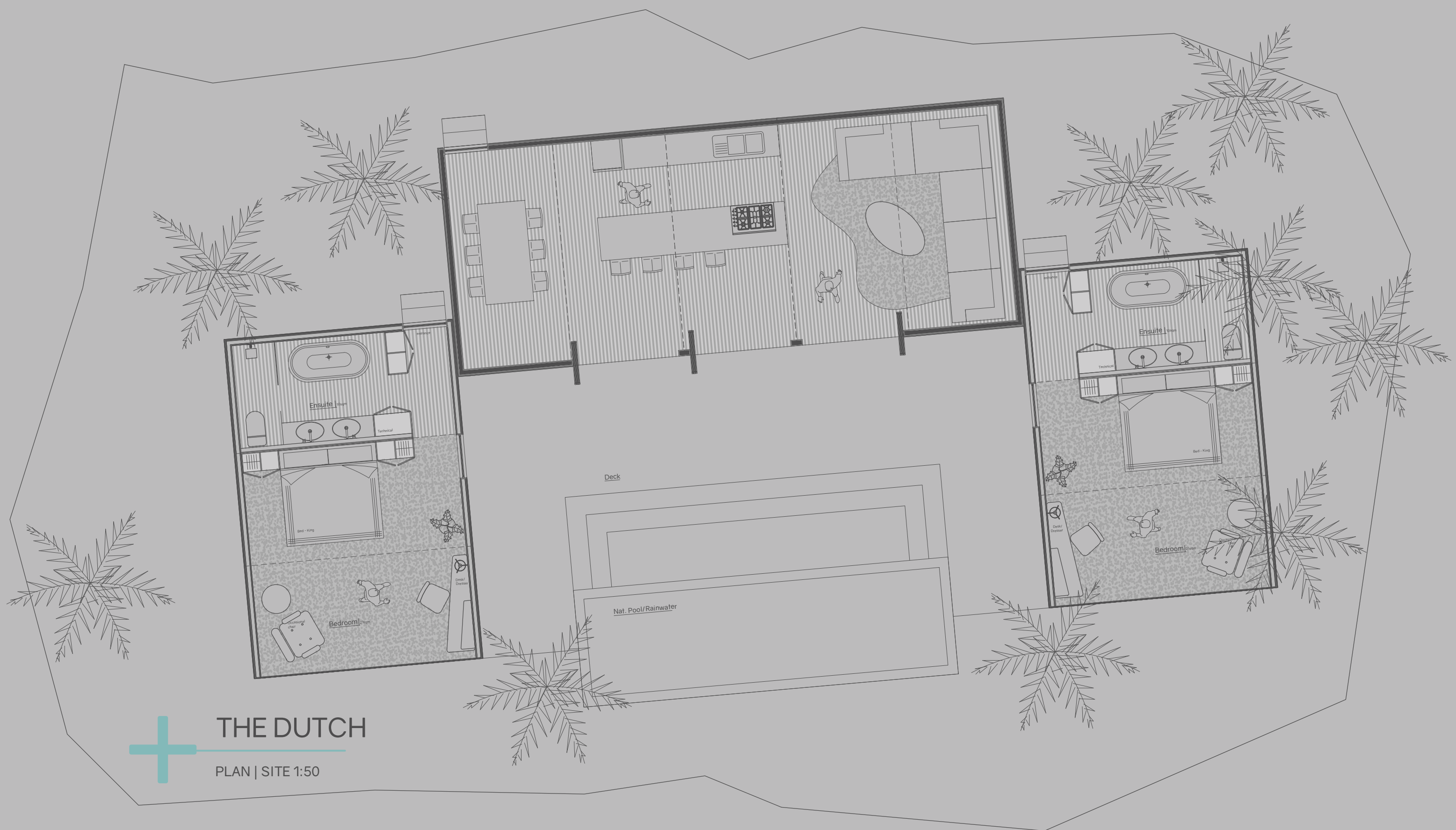
Ceilings -Eco Plasterboard Ceiling

Joinery - Ply Wood, engineered stone counter tops

Note: Foundations by client

The  
Simple  
Building co.

MODULAR . SIMPLE . LUXURY



CONFIGURATION OPTION- 5

The  
Simple  
Building co.

MODULAR . SIMPLE . LUXURY



BEDROOM- 6

The  
Simple  
Building co.

MODULAR . SIMPLE . LUXURY



KITCHEN - 7

The  
Simple  
Building co.

MODULAR . SIMPLE . LUXURY



COMBINED KITCHEN AND LIVING - 8

## F.A.Q.

### Q: Are The Simple Building co. lifestyle units completely off grid?

A: The short answer is not always. Although we provide solar power and rain water harvesting systems that suffice for some, it all depends on the environment that you are in and the level of energy/water use. By way of example, if you require AC and/or if the location is in an arid area then it would be very difficult to provide full off grid capabilities. Watch this space though, we are working on it

### Q: Are The Simple Building co. lifestyle units mobile?

A: Yes, all of our units are designed to be shipped worldwide and moved in time if necessary. This is party of our sustainability mission. No need to demolish or throw away, in time, simply move, sell or add more modules on to your existing unit.

### Q: Are The Simple Building co. lifestyle units modular?

A: Yes, all of our units are designed to be flexible and modular, meaning that in time you can add on to your existing units as your business/family/needs change

### Q: isn't steel bad for the environment?

A: A lot of factors were weighed up in considering the use of steel sub structure in our units. The steel industry has come along way in reducing energy consumption and CO2 emissions since the 90's (28% and 35% respectively), this factor coupled with the recyclability (80 million tons per year), longevity and strength of steel make it the right choice for our units. We are are constant on the look out for greater and better technologies, we will remain on the forefront of sustainable building practices.

### Q: Do we have to buy one of your standard designs or can we customise your units to suit our needs?

A: Absolutely, although our structures are standard, everything else is open for review. Our team of designers are on standby to assist with your specific needs.

### Q: Do you complete local authority approvals?

A: No, The Simple Building Co. does not complete and approvals, the client must appoint a local architect to ensure compliance with any necessary regulations.

### Q: Do you install units on site?

A: Not necessarily, we can however review this on a case by base basis and provide the service if needed.

## PROCESSS

### Say Hello

Once appointed, we'll set up an introduction call for you to meet your project guide and take a brief on your project. Choose from our list of finishes and furniture selections.

*Duration : 3 days*



### Think Tank

Our design team will go to work and complete the necessary drawings and concepts for your project and provide a final budget.

*Duration : 2 -3 weeks\**



### Give us the green light

Client sign off on final design pack.

80% Deposit Payment



### The Build

Units are manufactured

Client is invited to inspect the units and sign off on completion.

Final payment is made.

*Duration : TBC*



### The Drop

Units are shipped to destination and installed on site

*Duration : 2-4 weeks (excl shipping)\**

*\*For small to medium scale projects, TBC on larger developments and hotels*

